

For Lease



**Previous
Dental Office**



Excellent Location

**27 Turner Lane
West Chester, PA 19380**

For more information please contact:

David Heaney

Cell: (302)229.2242

E-mail: dth@healthcarefs.com

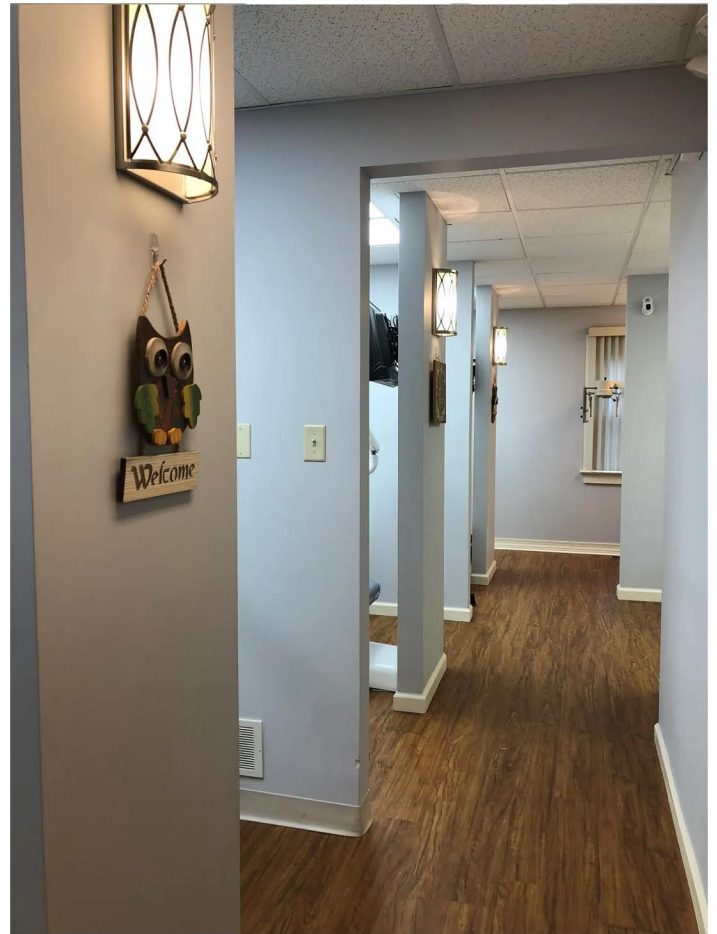


**Healthcare
Facilities
Solutions**

**Office: (302)995.6805
www.healthcarefs.com**

This information has been obtained from sources believed to be reliable but has not been verified. NO WARRANTY OR REPRESENTATION, EXPRESS OR IMPLIED, IS MADE AS TO THE CONDITION OF THE PROPERTY (OR PROPERTIES) REFERENCED HEREIN OR AS TO THE ACCURACY OR COMPLETENESS OF THE INFORMATION CONTAINED HEREIN, AND SAME IS SUBMITTED SUBJECT TO ERRORS, OMISSIONS, CHANGE OF PRICE, RENTAL OR OTHER CONDITIONS, WITHDRAWAL WITHOUT NOTICE, AND TO ANY SPECIAL LISTING CONDITIONS IMPOSED BY THE PROPERTY OWNER(S). ANY PROJECTIONS, OPINIONS OR ESTIMATES ARE SUBJECT TO UNCERTAINTY AND DO NOT SIGNIFY CURRENT OR FUTURE PROPERTY PERFORMANCE.

27 Turner Lane West Chester, PA 19380



Property Highlights:

- ✓ **1st Floor - 936 Sq. Ft. +/-**
2nd Floor - 936 Sq. Ft. +/-
Total - 1,872 Sq. Ft. +/-
Basement - 468 - 2,340 Sq. Ft. +/-
- ✓ **Previous Dental Office**
- ✓ **Ample Parking**
- ✓ **Unique Opportunity in West Chester, PA**

For more information please contact:

David Heaney

Cell: (302)229.2242

E-mail: dth@healthcarefs.com



Office: (302)995.6805
www.healthcarefs.com

This information has been obtained from sources believed to be reliable but has not been verified. NO WARRANTY OR REPRESENTATION, EXPRESS OR IMPLIED, IS MADE AS TO THE CONDITION OF THE PROPERTY (OR PROPERTIES) REFERENCED HEREIN OR AS TO THE ACCURACY OR COMPLETENESS OF THE INFORMATION CONTAINED HEREIN, AND SAME IS SUBMITTED SUBJECT TO ERRORS, OMISSIONS, CHANGE OF PRICE, RENTAL OR OTHER CONDITIONS, WITHDRAWAL WITHOUT NOTICE, AND TO ANY SPECIAL LISTING CONDITIONS IMPOSED BY THE PROPERTY OWNER(S). ANY PROJECTIONS, OPINIONS OR ESTIMATES ARE SUBJECT TO UNCERTAINTY AND DO NOT SIGNIFY CURRENT OR FUTURE PROPERTY PERFORMANCE.

27 Turner Lane West Chester, PA 19380

Details:

- **Type:** Office
- **Subtype:** Dental
- **Available:** 2 Floors Plus Basement
- **Total SF Available:**
 - 1st Floor - 936 Sq. Ft. +/-
 - 2nd Floor - 936 Sq. Ft. +/-
 - Total - 1,872 Sq. Ft. +/-
 - Basement - 468 - 2,340 Sq. Ft. +/-



For more information please contact:

David Heaney

Cell: (302)229.2242

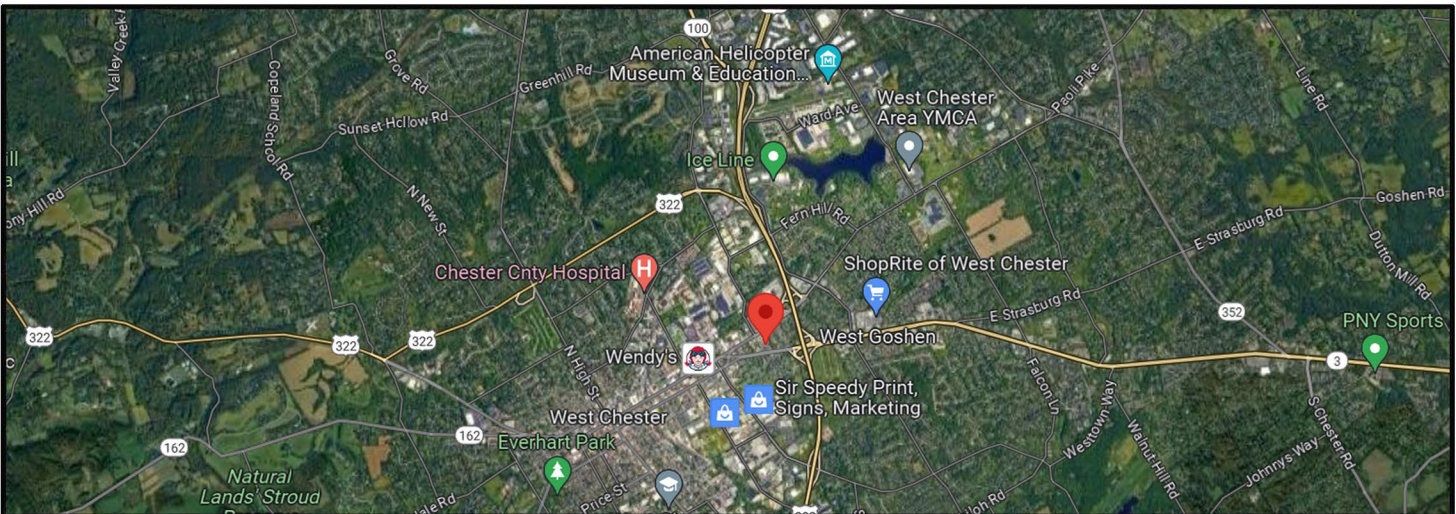
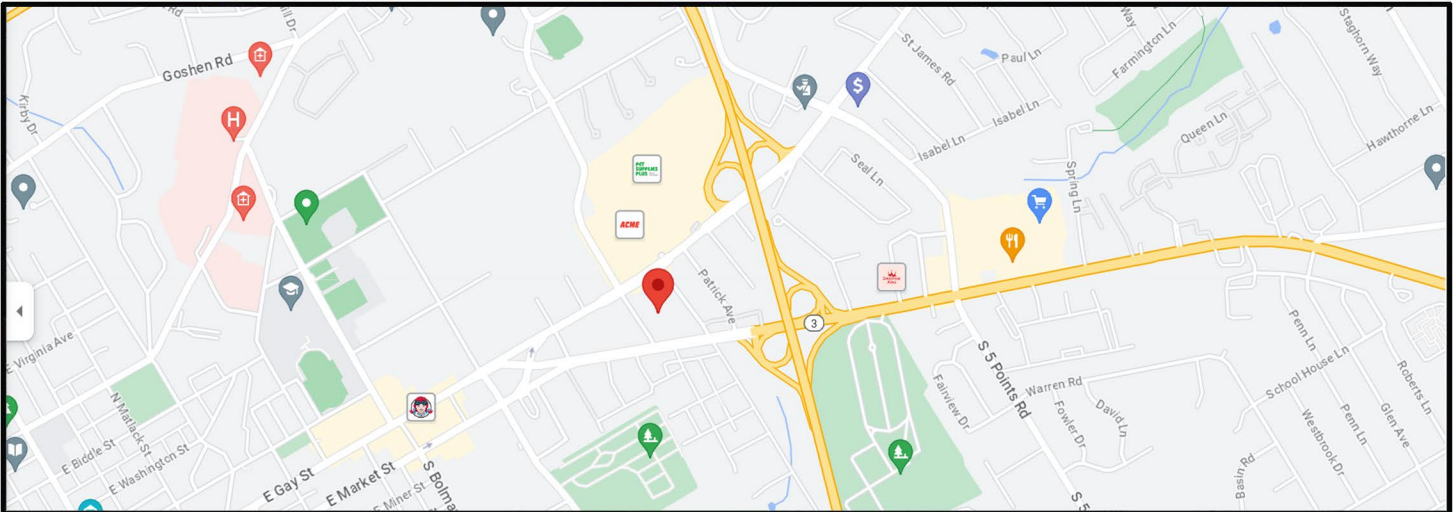
E-mail: dth@healthcarefs.com



**Healthcare
Facilities
Solutions**

**Office: (302)995.6805
www.healthcarefs.com**

27 Turner Lane West Chester, PA 19380



Demographics:

- Populations: 18,630
- Households: 6,832

For more information please contact:

David Heaney

Cell: (302)229.2242

E-mail: dth@healthcarefs.com



Office: (302)995.6805
www.healthcarefs.com

This information has been obtained from sources believed to be reliable but has not been verified. NO WARRANTY OR REPRESENTATION, EXPRESS OR IMPLIED, IS MADE AS TO THE CONDITION OF THE PROPERTY (OR PROPERTIES) REFERENCED HEREIN OR AS TO THE ACCURACY OR COMPLETENESS OF THE INFORMATION CONTAINED HEREIN, AND SAME IS SUBMITTED SUBJECT TO ERRORS, OMISSIONS, CHANGE OF PRICE, RENTAL OR OTHER CONDITIONS, WITHDRAWAL WITHOUT NOTICE, AND TO ANY SPECIAL LISTING CONDITIONS IMPOSED BY THE PROPERTY OWNER(S). ANY PROJECTIONS, OPINIONS OR ESTIMATES ARE SUBJECT TO UNCERTAINTY AND DO NOT SIGNIFY CURRENT OR FUTURE PROPERTY PERFORMANCE.