

# For Lease

**26744 John J. Williams Highway, Suite 4  
Millsboro, DE 19966**



**For more information please contact:**

**David Heaney**  
Principal  
C: (302)229-2242  
dth@healthcarefs.com

**Jack Clough**  
Associate  
C: (302)299-2021  
jbc@healthcarefs.com

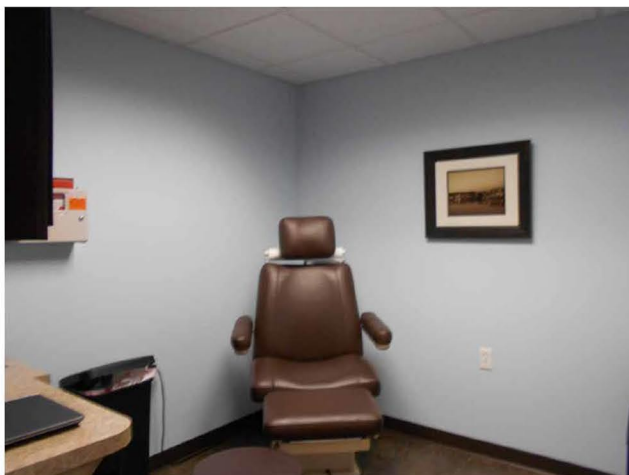


**0: (302)995-6805 | [www.healthcarefs.com](http://www.healthcarefs.com)**

# 26744 John J. Williams Highway, Suite 4 Millsboro, DE 19966

## Property Highlights:

- ✓ 2nd Floor Unit - Completely Fitted Out for 2 Provider Set Up
- ✓ 7 Exam Rooms and an X-Ray Room



For more information please contact:

**David Heaney**  
Principal  
C: (302)229-2242  
dth@healthcarefs.com

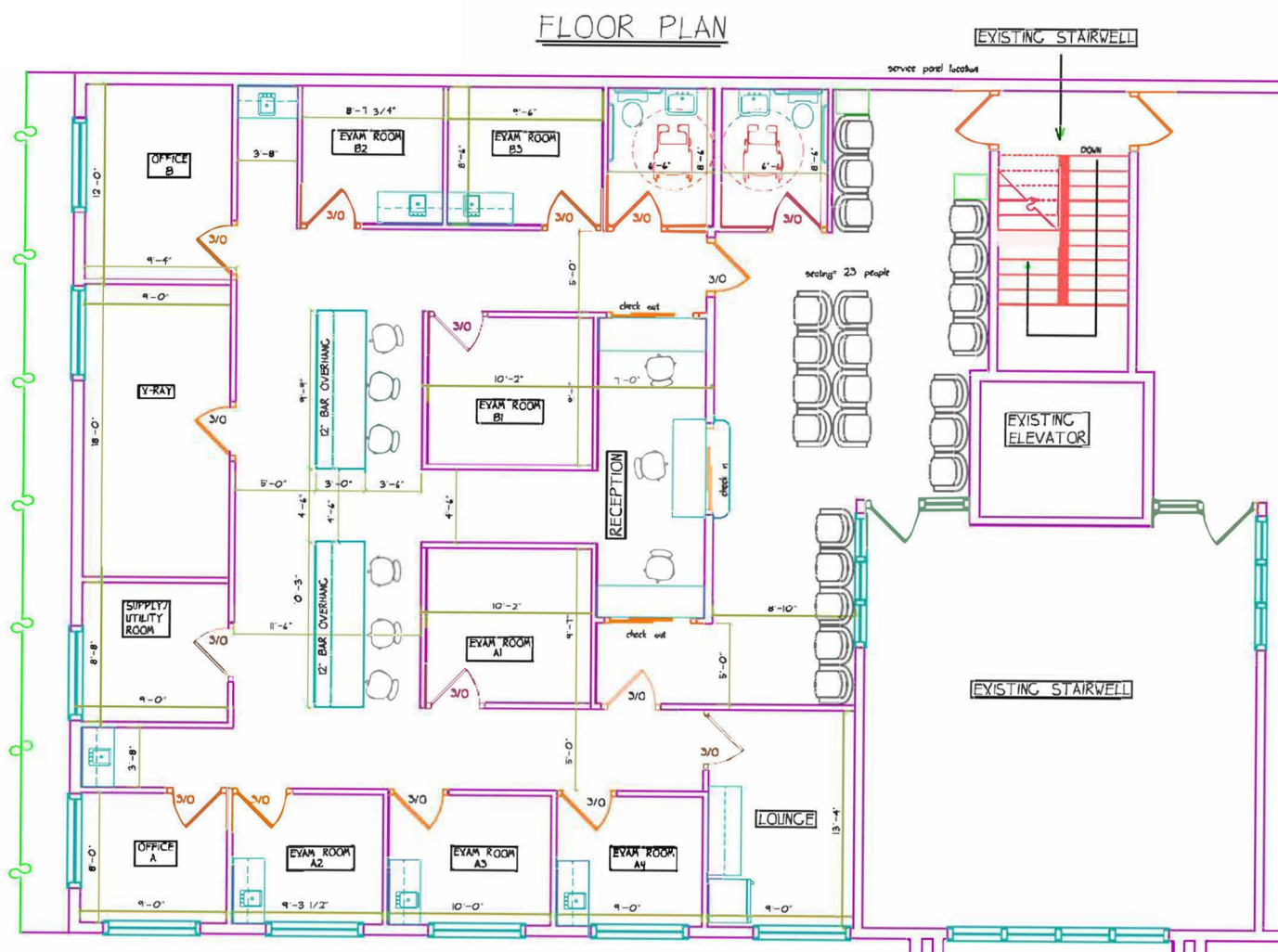
**Jack Clough**  
Associate  
C: (302)299-2021  
jbc@healthcarefs.com



# 26744 John J. Williams Highway, Suite 4 Millsboro, DE 19966

## Details:

- **Type:** Office
- **Subtype:** Medical
- **Available:** 2nd Floor Unit
- **Total SF Available:** 2,400 +/-



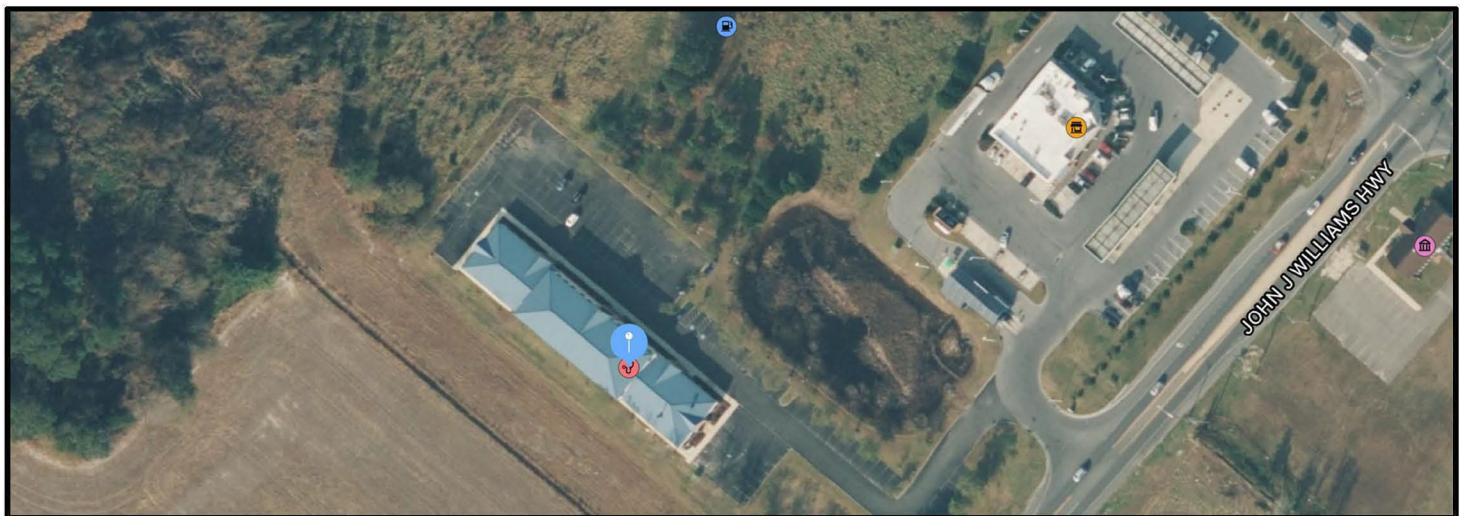
For more information please contact:

**David Heaney**  
Principal  
C: (302)229-2242  
dth@healthcarefs.com

**Jack Clough**  
Associate  
C: (302)299-2021  
jbc@healthcarefs.com



# 26744 John J. Williams Highway, Suite 4 Millsboro, DE 19966



## Demographics:

- Populations: 247,527 (Sussex County)
- Households: 99,858 (Sussex County)

For more information please contact:

**David Heaney**  
Principal  
C: (302)229-2242  
dth@healthcarefs.com

**Jack Clough**  
Associate  
C: (302)299-2021  
jbc@healthcarefs.com

